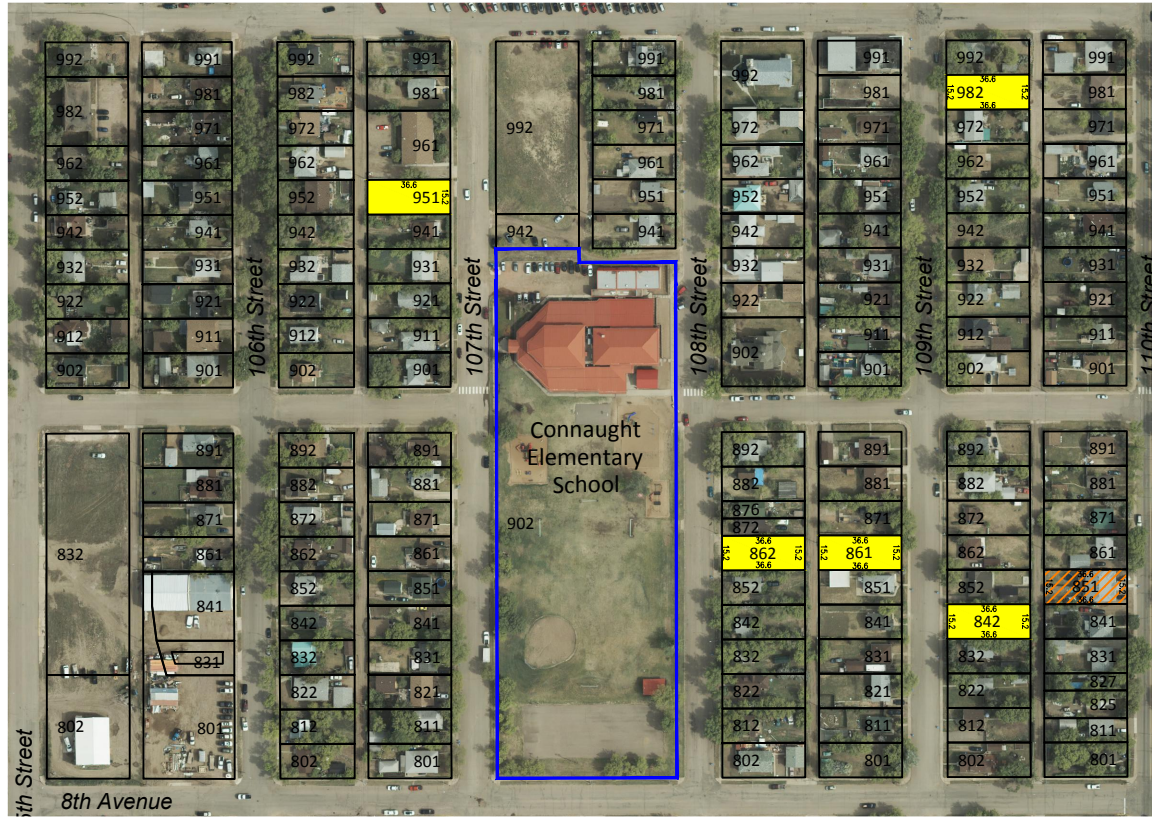


For Sale	Optioned	Sold
Park	School	Future

Note: All measurements are approximate and should be verified through survey



- CITY PLANNER
306 445 1732
- BUILDING INSPECTOR
306 445 1733
- BUSINESS DEVELOPMENT
306 445 1718

South Residential Land Inventory



- DRAWN BY:
COR
- DATE:
Jan 20, 2017
- PAGE:
1 of 1