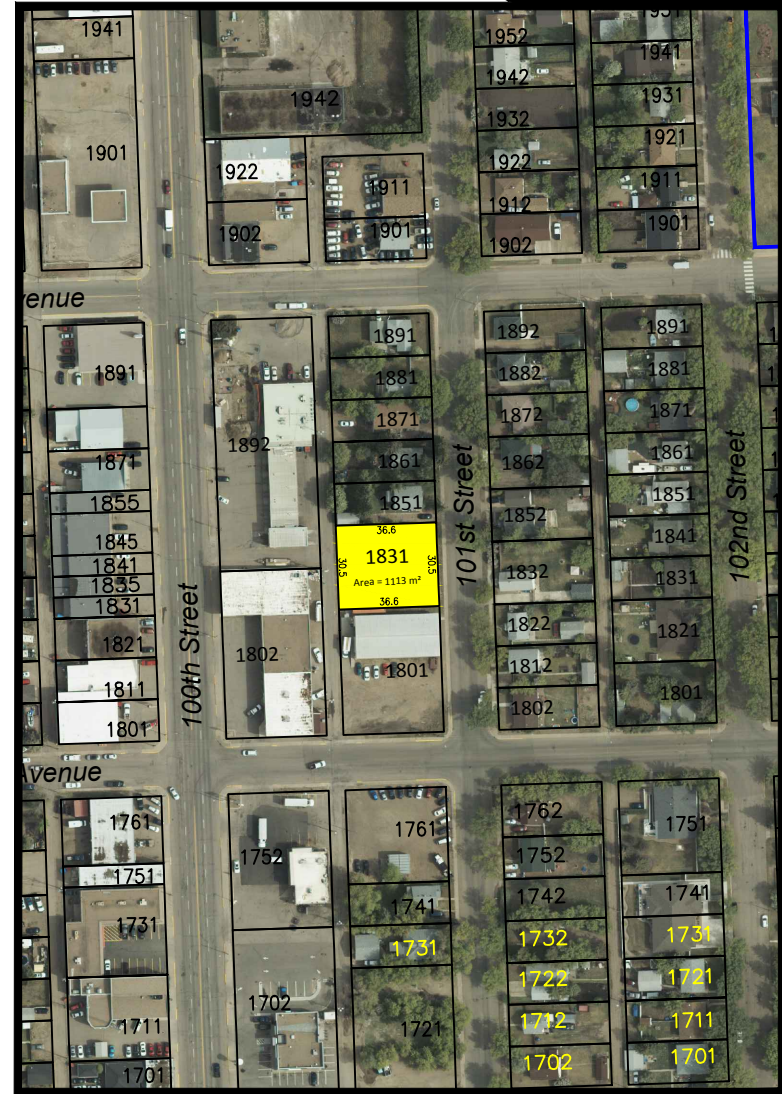
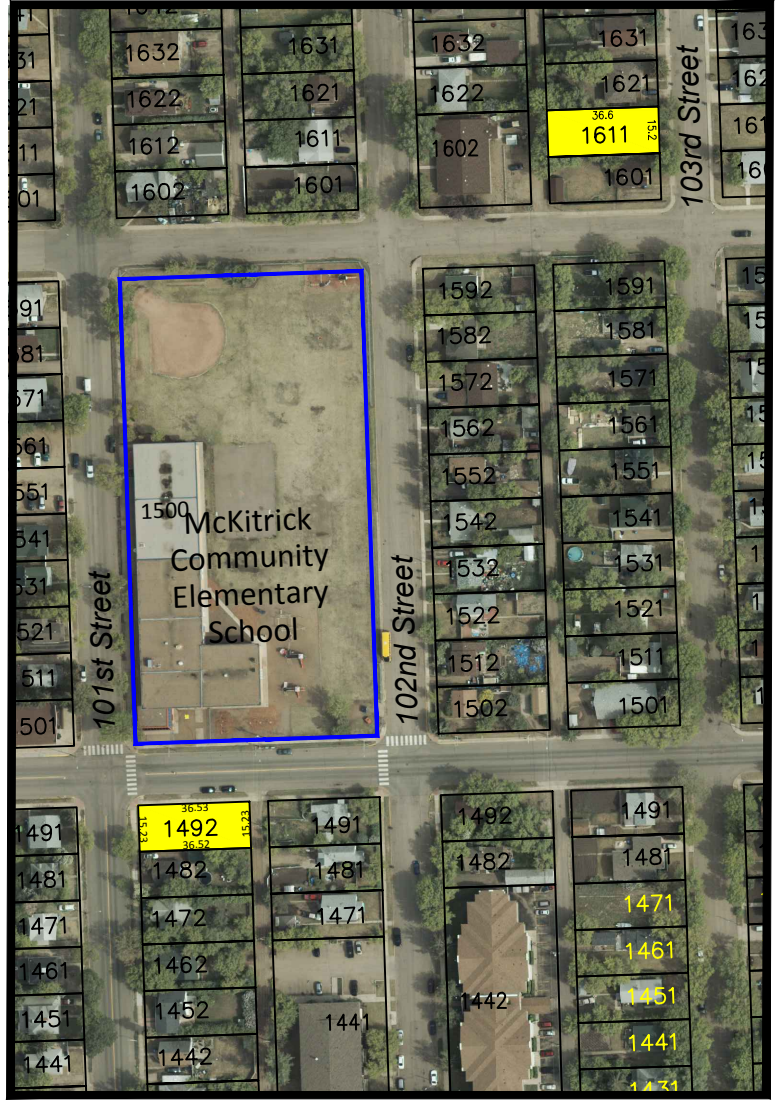


Note: All measurements are approximate and should be verified through survey

For Sale
Optioned
Sold  
Park
School
Future Development



- CITY PLANNER  
306 445 1732
- BUILDING INSPECTOR  
306 445 1733
- BUSINESS DEVELOPMENT  
306 445 1718

## Inner City Land Inventory



- DRAWN BY:  
RM
- DATE:  
Jan 20, 2017
- PAGE:  
1 of 1