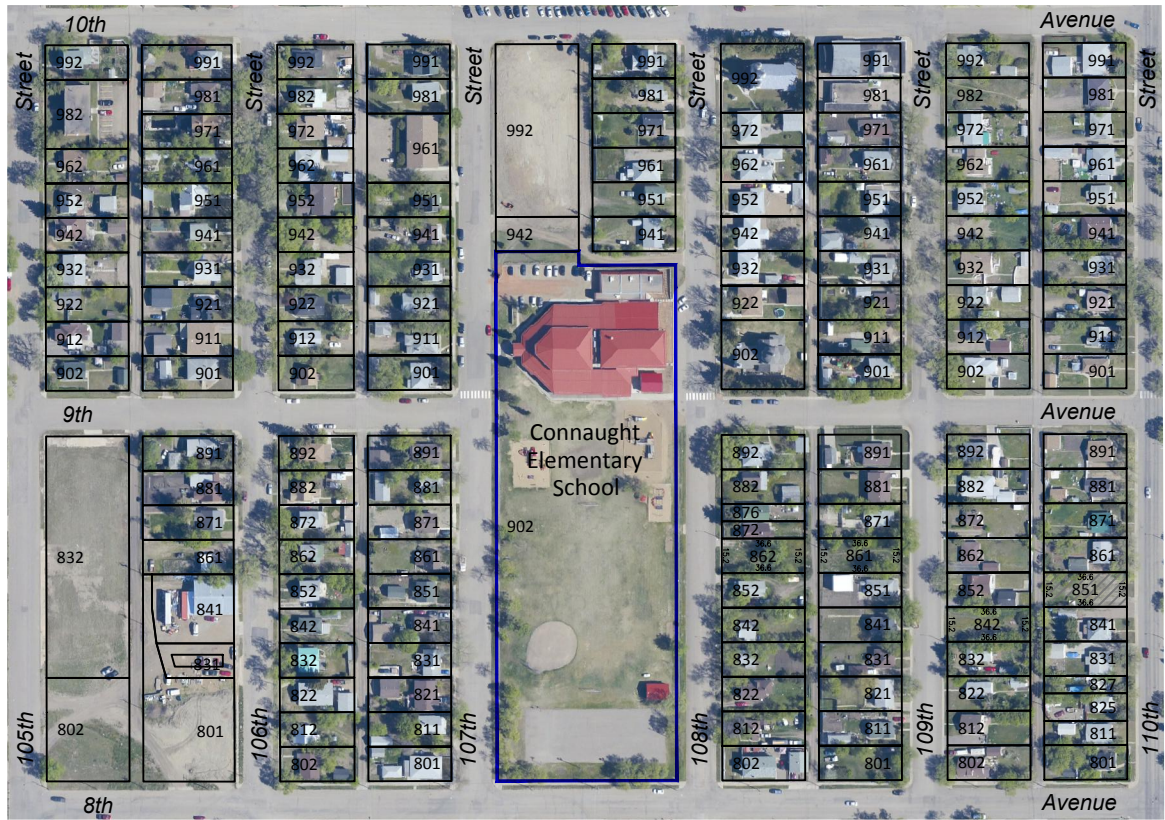
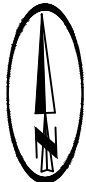


For Sale	Optioned	Sold
Park	School	Future



Note: All measurements are approximate and should be verified through survey



- CITY PLANNER  
306 445 1732
- BUILDING INSPECTOR  
306 445 1733
- BUSINESS DEVELOPMENT  
306 445 1718

## South Residential Land Inventory



- DRAWN BY:  
COR
- DATE:  
23 June 2011
- PAGE:  
1 of 1