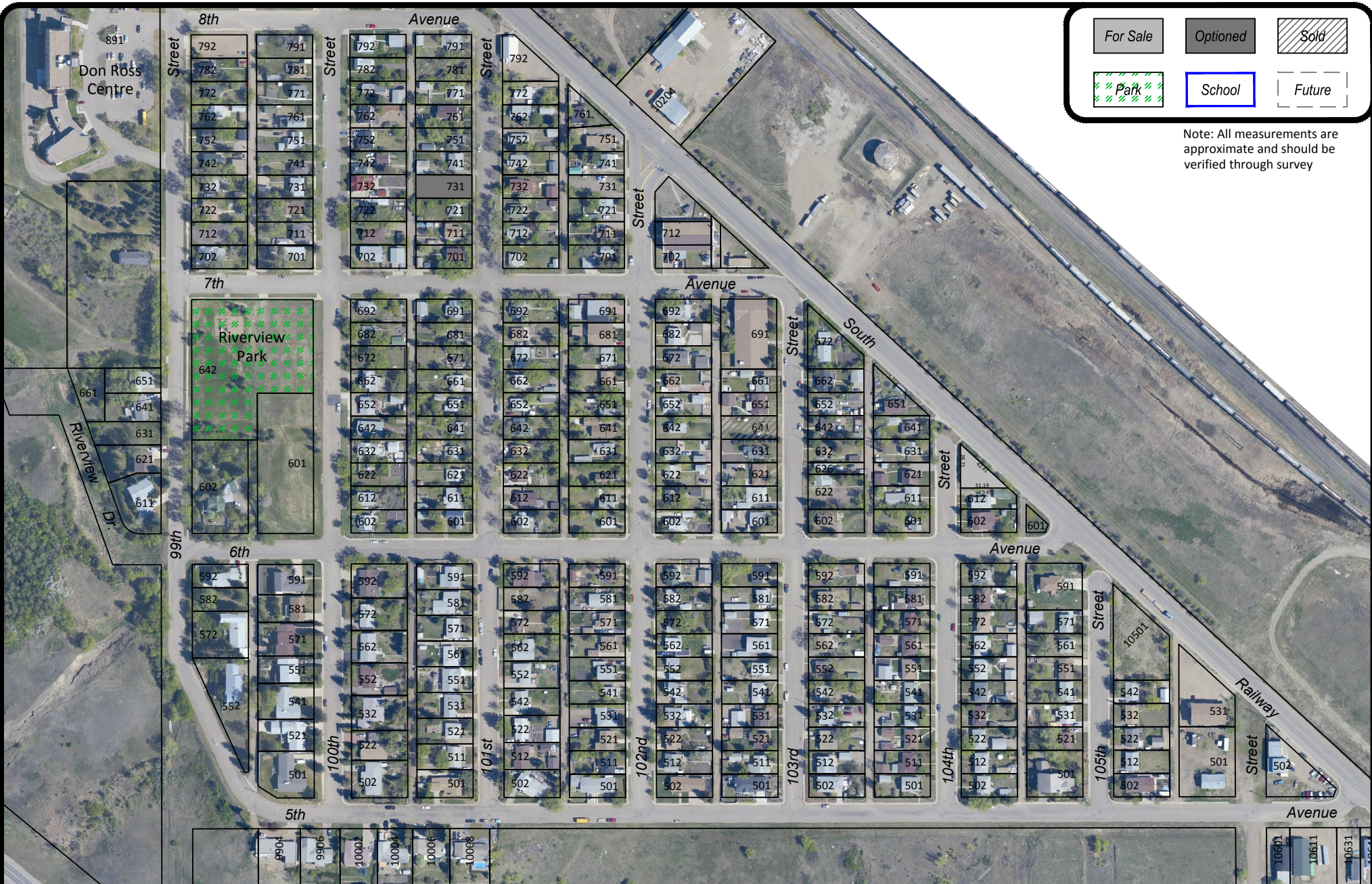


For Sale	Optioned	Sold
Park	School	Future

Note: All measurements are approximate and should be verified through survey



- CITY PLANNER  
306 445 1732
- BUILDING INSPECTOR  
306 445 1733
- BUSINESS DEVELOPMENT  
306 445 1718

## Riverview Land Inventory



- DRAWN BY:  
COR
- DATE:  
13 February 2012
- PAGE:  
1 of 1

